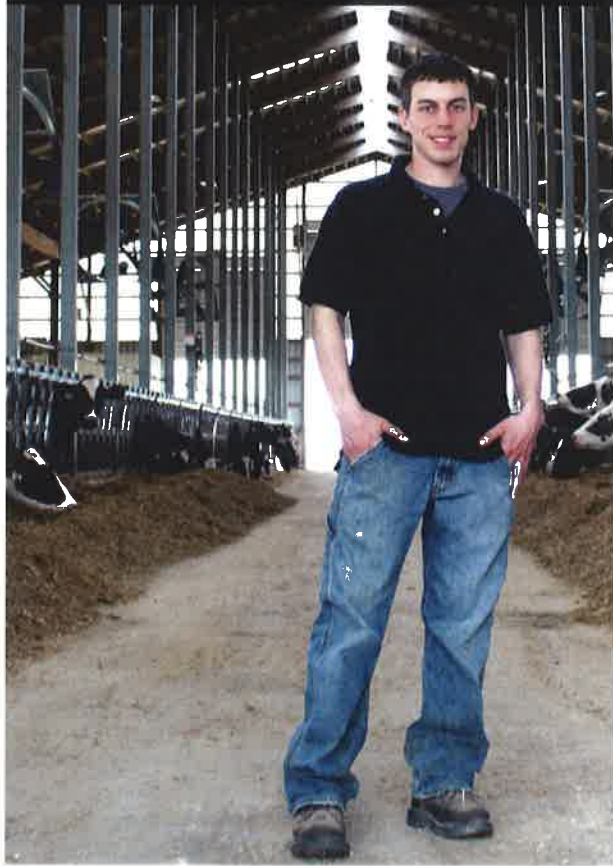


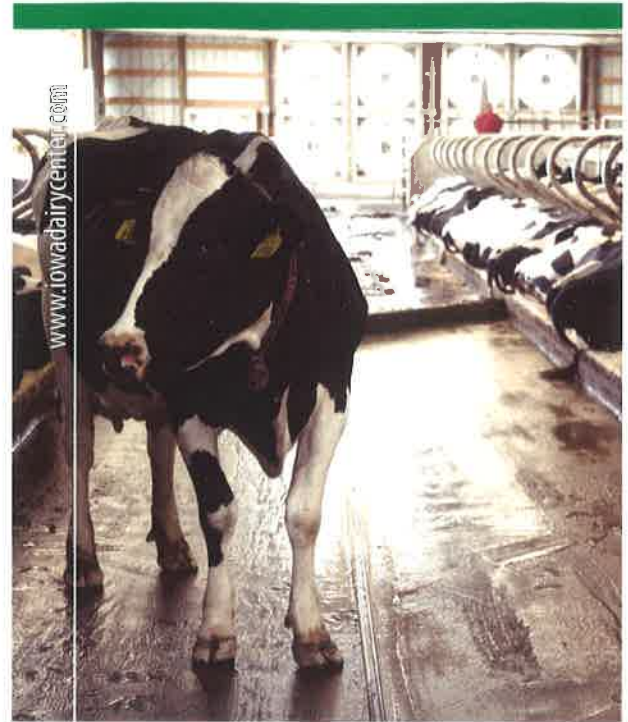


"I believe the courses in the Dairy Science program at Northeast Iowa Community College have applied to my career in the dairy industry. Whether it was herd lab at Iowa's Dairy Center, ag business or speech, they apply to dairy farming. Some of my most memorable experiences were being involved with the Dairy Club, being on the dairy judging teams and helping to start the first Dairy Club sale at the College. Attending Postsecondary Agricultural Student (PAS) conferences and competitions were also great experiences."

KYLE KOESTER, '06 • KOESTER DAIRY INC., DAKOTA, III.  
300 REGISTERED HOLSTEINS, 36,000 LB. RHA



**Tourism Partners:**



# IOWA'S DAIRY CENTER

Calmar, Iowa

**In Partnership with:**  
Iowa State University Extension & Outreach  
Midwest Dairy Association  
Northeast Iowa Community College



/iowadairycenter

**LEARN MORE.**

Iowa's Dairy Center  
1527 Hwy. 150 S.  
P.O. Box 400  
Calmar, IA 52132

info@iowadairycenter.com  
www.iowadairycenter.com

563.534.9957, ext. 107  
866.474.4692

It is the policy of Northeast Iowa Community College not to discriminate on the basis of race, color, national origin, sex, disability, age, employment, sexual orientation, gender identity, creed, religion, and actual or potential parental, family or marital status in its programs, activities, or employment practices as required by the Iowa Code §§ 216.6 and 216.9, Titles VI and VII of the Civil Rights Act of 1964 (42 U.S.C. §§ 2000d and 2000e), the Equal Pay Act of 1973 (29 U.S.C. § 206, et seq.), Title IX (Educational Amendments, 20 U.S.C. §§ 1681 - 1688), Section 504 (Rehabilitation Act of 1973, 29 U.S.C. § 794), and Title II of the Americans with Disabilities Act (42 U.S.C. § 12101, et seq.).

REV: 06/17 | C\_DC\_Brochure



## OPERATIONAL DAIRY FARM.

Iowa's Dairy Center is operated by the Northeast Iowa Dairy Foundation, a non-profit, grassroots organization formed to prepare young men and women to operate dairy farms, provide ongoing education for existing dairy farmers and serve as a public educational facility.

The Iowa's Dairy Center includes:

- Meeting Space
- Dairy History Museum
- Unique double-eight milking parlor demonstrating both herringbone and parallel parlor styles side-by-side
- Robotic milking system including two Lely A4 robotic units milking Jersey and Holstein cows
- Freestall barn with emphasis on cow comfort using sand bedding
- Transition cow barn
- Calf barn
- Robotic technology

## EDUCATING STUDENTS.

Northeast Iowa Community College (NICC) provides two-year degree options at the world renowned Iowa Dairy Center:

- Dairy Science Technology
- Ag Business
- Beef Science Technology
- Large Animal Veterinary Technician

In two years or less graduates can:

- Return as the next generation on their family farm
- Immediately enter the agriculture or dairy workforce
- Work in the animal healthcare or agronomy industries
- Transfer as juniors to four-year institutions

The learning environment for these programs is unparalleled; our focus on hands-on learning distinguishes Northeast Iowa Community College from other institutions.

## COMMUNITY IMPACT.

### Producer Education

The Dairy Foundation partners with Northeast Iowa Community College Business and Community Solutions and Iowa State University Extension and Outreach to provide continuing education solutions to grow skills, including:

- Midwest Dairy School
- Artificial Insemination Certification
- Robotic Milking Workshops
- Dairy Days
- Dairy Tours
- World Dairy Expo Bus Trip

### Consumer Tourism and Community Events

Iowa's Dairy Center is not only a working farm, but a tourist attraction for the community to learn more about modern dairy farming. The center attracts and educates more than 10,000 visitors annually.

Events include:

- Breakfast on the Farm
- Ag Safety Day
- Iowa Dairy Story

### View our Facilities Online.

Visit [www.iowadairycenter.com](http://www.iowadairycenter.com) to watch live webcams of milking facilities, freestall barn and calving area.

### Schedule a Tour or Stop by Today!

☎ 563.534.9957, ext. 107

✉ [info@iowadairycenter.com](mailto:info@iowadairycenter.com)