

The Mission of the Northeast Iowa Community Based Dairy Foundation is to enhance and grow the dairy industry through people by providing education, demonstration and research.

Vision: Successful dairy farm families supported by a thriving dairy industry which in turn supports vital local communities.

The Northeast Iowa Community Based Dairy Foundation works with Northeast Iowa Community College and Iowa State University to offer educational programs to students and existing dairy farm families to help them prepare for the future.

Thank you for your generosity & memberships!

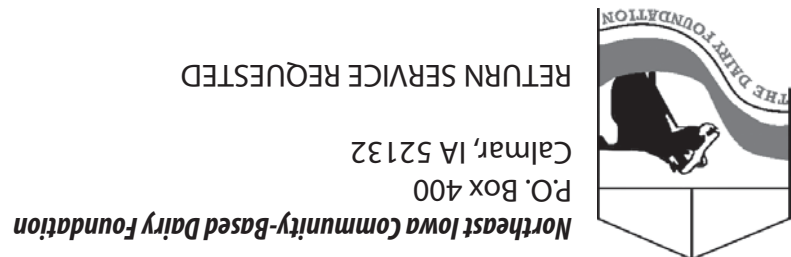
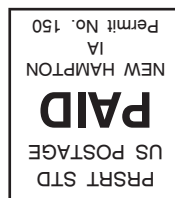
Thank you to Mike and Kathleen Scott of Westage, Iowa for recently becoming members of the Dairy Foundation. Your support of our organization is greatly appreciated.

If you are interested in learning more about making a tax-deductible contribution to the Dairy Foundation to strengthen the future of the dairy industry, or supporting us with a lifetime membership, please contact Megan at 563-534-9957, ext. 107 or email kregelm@nicc.edu.

Have an idea, comment or suggestion for the Northeast Iowa Community-Based Dairy Foundation? Let us know! Call 563-534-9957, email info@iowadairycenter.com or talk to a member of the executive board. Thanks!

Be sure to visit us online at www.iowadairycenter.com

Northeast Iowa Community-Based Dairy Foundation • 1527 Hwy. 150 South • Calmar, IA 52132 • Phone: (563) 534-9957 • www.iowadairycenter.com



RETURN SERVICE REQUESTED

Calmar, IA 52132

P.O. Box 400

Northeast Iowa Community-Based Dairy Foundation

DAIRY CENTER Connection



News from the Northeast Iowa Community-Based Dairy Foundation

RURAL ELECTRIC COOPERATIVES DONATE TO NORTHEAST IOWA DAIRY FOUNDATION AND ROBOTICS MILKING SYSTEM

Nine Iowa energy cooperatives and the Iowa Area Development Group Community Foundation donated to the Northeast Iowa Dairy Foundation in support of dairy education and a new robotics milking system being installed at Iowa's Dairy Center, located just south of Northeast Iowa Community College's (NICC) Calmar campus on Highway 150. The Rural Electric Cooperatives formally made its donation, in the amount of \$19,000, on Aug. 26 at the Dairy Center. Gary Kregel, Northeast Iowa Dairy Foundation president,

recognized the organization for its support of agriculture, the local livestock industry and emerging robotics technologies that are vital to the success of the dairy industry in Iowa. "Communities where livestock or value-added agriculture are present are more vibrant due to expanding economies and population growth. The participating Rural Electric Cooperatives recognize the importance of having a livestock industry and we thank them for that," Kregel said. "They've shown their support of the robotic technology being implement-

ed at the Dairy Center and the Northeast Iowa Dairy Foundation believes that such technology will be instrumental in keeping the dairy industry growing in Iowa." Participating Rural Electric Cooperatives include Allamakee Clayton Electric Cooperative, Butler Co. REC, Eastern Iowa Light & Power, Hawkeye REC, Heartland Power Cooperative, and Maquoketa Valley Electric Cooperative and their generation and transmission cooperatives, Central Iowa Power Cooperative, Corn

Continued on page 3...

ISDA Policy Meetings

Mark your calendars for the 2013 ISDA policy drafting meetings. Attendees will review current policy and proposed resolutions, as well as draft new resolutions. This is an important meeting for ISDA members to share opinions and review ISDA policy. The 2014 legislative session starts in early January and it is essential for Iowa's dairy industry to come together to draft resolutions that will drive the association's initiatives in the year to come. The meeting dates and locations are as follows:

Wednesday, October 23 at the ISU Sioux County Extension office. 400 Central Ave. NW, Suite 700, Orange City (downstairs classroom)

Wednesday, October 30 at Iowa's Dairy Center. 1527 Hwy. 150; South, Calmar, IA Wednesday, November 13 at the ISU dairy farm classroom, 52470 260th St., Ames

All meetings are from 11 a.m. to 3 p.m. and lunch will be provided. All current ISDA members are invited to attend. If you are not currently an ISDA member but would like to have a say in policy that affects Iowa's dairy farmers, new memberships will be accepted at the door. After the Policy Drafting Meetings, proposed resolutions will be sent to ISDA Annual Meeting Delegates for review. Final voting on resolutions will take place at ISDA's annual meeting on January 3.

In order to get an accurate count for lunch and meeting handouts, please RSVP to Jessica Bloomberg by calling 515-971-3620 or email jessicab@iowadairy.org. ISDA members unable to attend the Policy Drafting Meetings are welcome to submit resolutions and suggestions in writing. All comments must be received by Friday, November 8. You may review current ISDA policy by visiting the ISDA website www.iowadairy.org and clicking on the link to the 2013 ISDA Policy.

A Word from the President - Gary Kregel

The calendar indicates that fall is officially here. A time of the year that seems to bring endless activity around the farm. That is especially true if you are involved in any kind of construction project as we are at the Dairy Center with the robotic project nearing completion. As final retrofit work is being done on existing facilities the shuffle of cows to accommodate workers boards on chaotic at times. While startup of the robots is close, it is later than we anticipated therefore making it unfeasible to have the grand opening yet this fall instead we will schedule for early spring. This will give both the cows and staff time to acclimate themselves to the new routine.

We would like to give special thanks to two major sponsors of the robotic project, Midwest Dairy Association and Iowa's electric coops. Their foresight of the future of robotics in the dairy industry should be commended. Thank you for your support. We are also hopeful many more organizations, companies, and individuals will come to the same conclusion and offer financial support to the robot project, and in turn, have their name or group be recognized on the donor wall in the new facility.

With fall also comes the harvest, which for most will be better than last year but still with some challenges as everyone in northeast Iowa, southern Minnesota, and Wisconsin had a rough start to the growing season. I know for a fact there were many acres of corn not planted till June including some of our own. With the hustle and bustle of harvest I remind everyone to be safe.



Thank you to our sponsors of the bus trip to World Dairy Expo:

Elanco, Fitzgerald Inc., Land O'Lakes, Mycogen, Farmers Union Cooperative, Zoetis Animal Health, Fort Atkinson Hay, Diamond V, Spillville Mill, Nelson Dairy Consultants, Genex, Swiss Valley Farms and AMPI.

Become a Dairy Foundation Member today! Also 'like' us on facebook @ Northeast Iowa Dairy Foundation!

Join the Northeast Iowa Dairy Foundation and contribute to the future of the dairy industry!

Name _____

Address _____

City _____ State _____ Zip _____

Phone _____ Email _____

County _____

Mail to: Northeast Iowa Dairy Foundation, Attn: Coordinator
P.O. Box 400, Calmar, IA 52132

Please make checks payable to the Northeast Iowa Dairy Foundation.

Thank you for your contribution. A receipt will be mailed to you.

Please credit \$25 as my annual membership

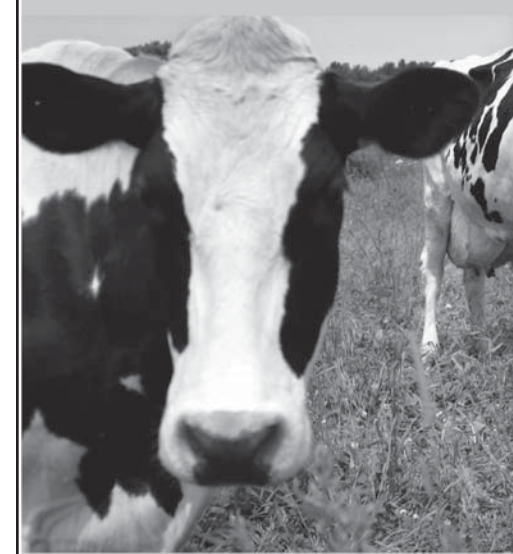
Please credit \$250 as my lifetime membership

Please update my membership record with the information at left.

Please call me to discuss a gift idea.

I would like to include the Dairy Foundation in my estate plan. Please call me to discuss.

The Northeast Iowa Community-Based Dairy Foundation was created for educational purposes and has been designated as an IRS Sec. 501 (c)3 public charitable educational organization for federal income, estate and gift tax purposes.



MIDWEST DAIRY SCHOOL FOR GENERATIONAL TRANSFER

Thursday, November

21

Iowa's Dairy Center | Calmar | 9:30 a.m. - 3 p.m.

SCHEDULE

9:30 – 10 a.m.

Registration | Iowa's Dairy Center, Room 115

10 – 10:50 a.m.

"The Business Side of Farm Transfers"
Kelvin Leibold and Kristen Schulte

Financial estate planning, starting the conversation.

11 – 11:50 a.m.

"The Relationship Side of Farm Transfers"
Larry Tranel

Dealing with the emotional and family side of farm transfers.

11:50 a.m. – 12:30 p.m.

Lunch and Sponsor Exhibits

12:30 – 1:30 p.m.

Ag Producer & Lending Panel

1:45 – 2:30 p.m.

"Options for Partnerships"
Dick Horne, Room 115

OR

"Beginning Farmer: Accessing Capital"
Steve Ferguson, Room 111

This program will address how families can work together to incorporate all members into the family operation in a manner that works for everyone involved. We will look at the both ends of the farming business—those entering and taking over the business as well as those phasing out of the operation.

Larry Tranel, ISU Extension Dairy Specialist, Kristen Schulte and Kelvin Leibold, Farm and Ag Business Management Specialists, will share their knowledge of how this can work to everyone's benefit. The program will be enhanced by a panel of dairy producers and farmers who have started their operations in a variety of ways. The day will conclude with your choice of attending "Options for Partnerships" with Dick Horn, agricultural banker and educator, or "Beginning Farmer: Accessing Capital" with Steve Ferguson, Iowa AG Authority Program Specialist.

This program is free of charge, through the generous support of local businesses.

Registration Deadline: Thursday, November 14

Register Today!

800.728.2256, ext. 399
www.nicc.edu/solutions

1527 Hwy. 150 S | Calmar, IA

Dairy Science Student news

Maquoketa Valley FFA Tops Dairy Judging at Tri State Expo

Nearly 450 FFA members from 16 Iowa, Minnesota and Wisconsin high schools participated in the annual Tri State Dairy Expo held September 12 at Iowa's Dairy Center in Calmar. The expo featured dairy judging and dairy products contests, and the Northeast District Dairy Judging and District Soils contests. Northeast Iowa Community College (NICC) Dairy Science Club and agriculture students helped with the preparation of cattle, contests and seminars.

In addition to a competition for students, the dairy expo features seminars on dairy and agricultural topics, which included linear scoring, giving reasons in a dairy cattle contest and how to judge a dairy cow. Iowa State University Dairy Science students presented the seminars. NICC agriculture faculty also discussed possible careers in ag and Dave Rapson, owner of Country View Dairy, talked about how his family farm began doing on-farm processing and his family's successful venture.

Many businesses contributed to the expo, including Nelson Dairy Consultants, who continually donate all the plaques and ribbons for top scorers.

Competition results were as follows:

Dairy Judging with oral reasons

Top Individuals

1. Matthew Lansing, Maquoketa Valley
2. Jessica Wurzer, Sumner Fredericksburg
3. Garret Ohloff, Postville
4. Nathan Arthur, Sumner Fredericksburg
5. Spencer Kurth, Lewiston Altura

Top Teams

1. Maquoketa Valley FFA - Jenna Beitz, Matthew Lansing, Ryan Goedken, Kaleb Kruse
2. Sumner Fredericksburg FFA- Jessica Wurzer, Michael Grave, Nathan Arthur, Lindsey Meyer
3. Lewiston Altura FFA - Karli Moger, Jasmine Boynton, Spencer Kurth, Derek Salwey

Dairy Judging without reasons

Top Individuals

1. Blake Monnahan, Oelwein
2. Austin Parmely, Oelwein
3. Bobby Lang, Monona
4. Ryan Moon, Monona
5. Jade Gamm, Oelwein

Top Teams

1. Monona FFA – Brady Henkes, Ryan Moon, Bobby Lang, Catie Lang
2. Oelwein FFA – Jenna Walker, Olivia Williams, Abby Kastil, Chyenne Voshell
3. Maquoketa Valley FFA – Adam Riniker, Andy Riniker, Adam Funke, Amanda Hoefler

Dairy Products Contest

Top Individuals

1. Addie Pacha, Washington
2. Sam Kipp, Sumner Fredericksburg
3. Libby Schnicker, Washington
4. Mikki Boyd, Spring Grove
5. Maddie Kleese, Washington

Top Teams

1. Washington FFA - Maddie Kleese, Addie Pacha, Libby Schnicker, Emma Stout
2. Monticello FFA - Cortney Price, Kaitlyn Heinrich, Stephanie Manternach
3. Sumner Fredericksburg FFA - Hunter Schmitt, Sam Kipp, Dustin

Matike

Cheese ID

1. Addie Pacha, Washington
 2. Sam Kipp, Sumner Fredericksburg
- Milk Evaluation
1. Addie Pacha, Washington
 2. Libby Schnicker, Washington
- Real vs. Imitation
1. Mikki Boyd, Spring Grove
 2. Stine Myrah, Spring Grove

District FFA Dairy Judging Contest

Top Individuals

1. Matt Lansing, Maquoketa Valley
2. Jessica Wurzer, Sumner Fredericksburg
3. Nathan Arthur, Sumner Fredericksburg
4. Kaleb Kruse, Maquoketa Valley
5. Trevor Malven, Cresco

Top Teams

1. Sumner Fredericksburg FFA - Jessica Wurzer, Michael Grave, Nathan Arthur, Lindsey Meyer
2. Maquoketa Valley FFA - Jenna Beitz, Matthew Lansing, Ryan Goedken, Kaleb Kruse
3. Crestwood FFA - Trevor Malven, Jason Malven, Michael Lensch, Abby Huhe

District FFA Soils Contest

Top Individuals

1. Olivia Rauen, Maquoketa Valley
2. Shelby Troendle, Waukon
3. Aubree Beenken, North Tama
4. Cole Phillips, South Winneshiek
5. Lucas Brinks, South Winneshiek

Top Teams

1. Waukon FFA
2. Maquoketa Valley FFA
3. North Tama FFA

View photos from the event on the Dairy Foundation's facebook page.

RURAL ELECTRIC COOPERATIVES continued...

Belt Power and Dairyland Power. The Iowa Area Development Group, Des Moines, provides economic development support to over 200 Iowa electric and telephone cooperatives as well as several municipal utilities. Their Community Foundation was pleased to join the cooperatives in support of this project.

In addition to the labor benefits gained through automation, robotic milking systems are also more efficient in terms of their energy consumption, particularly during peak demand times. Energy costs for all members are impacted by the cost of power that is higher during these

periods of peak demand, typically 5 - 9 p.m.

According to Mike Meissen, Vice President of Value Added Ag for the Iowa Area Development Group, "Typical energy consumption for traditional, two-time milking per day dairy operations results in significant spikes in energy demand during their milking times. With robotic milking systems, the demand is leveled out over a 24-hour period because cows are milked throughout the day rather than at designated times. This helps to manage costs for dairy operations and, by reducing energy use during periods of high demand, the cooperatives will

save money that can help maintain affordable electricity rates for all members."

The new \$1.7 million robotic milking system, and the construction in progress to build a new addition at Iowa's Dairy Center to accommodate this technology, will also provide enhanced stall conditions for the 300-cow herd, including improved ventilation and bedding with sand for enhanced animal comfort. There are also benefits in the long run for the region's dairymen as robotics technology gains ground and support because the introduction of robotics is predicted to improve dairy farmers' quality of life.



Pictured in photo, left to right: Cheri Popp, of Central Iowa Power Cooperative; Dr. Liang Chee Wee, NICC president; John Molumby, of Allamakee Clayton Electric Cooperative; Phil Hemesath, Northeast Iowa Dairy Foundation vice president; Mike Meissen, of Iowa Area Development Group; Dave Mohr, of Eastern Iowa Light & Power; Gary Kregel, Northeast Iowa Dairy Foundation president; David Lawstuen, NICC Dairy Science program instructor; and Patty Manuel, of Maquoketa Valley Electric Cooperative.

Coordinator Message - Megan Kregel

ROBOTIC MILKING SYSTEM OFFICIALS ENRICH NEW PARTNERS WITH VISIT TO IOWA'S DAIRY CENTER

Top Lely executives who lead an international agricultural product and services manufacturing corporation visited Iowa's Dairy Center on July 11th to have breakfast and tour the center with Northeast Iowa Dairy Foundation officials and Northeast Iowa Community College (NICC) faculty and staff. Iowa's Dairy Center is located just south of the NICC Calmar campus on Highway 150.

Lely is a new partner with the Northeast Iowa Dairy Foundation, NICC and is the corporation that manufactured the new robotic milking system currently being installed at the dairy center. Lely Group CEO Alexander van der Lely, President of Lely North America Peter Langebeeke and Gijs Scholman, CCO of Lely Holding, made the trip to Calmar to see the unique center and learn more about the successful Dairy Science and agricultural programs offered at NICC. The corporation is headquartered in Holland. The company's representatives also met with Fitzgerald Inc, of Elkader, the company installing the system for the college and Dairy Center. NICC agriculture faculty member David Lawstuen applauded the visit and the opportunity to meet the dairy industry leaders. "It was a great morning; we're very excited about the partnership and we're anxiously awaiting the completion of the robotic project," Lawstuen said. "The partnership with Lely promises to strengthen not only the Dairy Science program, but all of the agriculture programs at NICC." Northeast Iowa Dairy Foundation President Gary Kregel said the new partnership between Lely and the foundation is a positive development for the advancement of local dairy science education and may create new opportunities for community members to learn about technologies that are transforming agriculture.

"It proved to be a very positive visit. It was an opportunity for the Lely representatives to fully understand all of the exposure that the foundation has to students, producers and consumers. They were able to see how their equipment will be showcased in our facility," he said. "I think Lely is quite pleased with the decision to become a partner at the Dairy Center."

The Lely officials were in Iowa to visit a new manufacturing plant the company built in Pella, and the corporate leadership regularly tours facilities to visit with producers or observe manufacturing processes for their robotic milking product, according to Megan Kregel, Dairy Center Coordinator.

"We were thrilled to host the Lely Group and are happy to be



installing such a great product. Lely is a very reputable and respected company. We had breakfast, gave a short presentation about the Dairy Center and gave our guests a tour of the center and installation progress on the robotic system," Kregel said. Kregel added that the company's officials were impressed with the facility and interested in the career and education plans for NICC Dairy Science graduates.

"Fifty percent of our graduates return to a farm, and Lely sees a future customer base and possibly a future hiring base with our graduates," Kregel added.

The new \$1.7 million robotic milking system, and the construction in progress to build a new addition at Iowa's Dairy Center to accommodate this technology, will also provide enhanced stall conditions for the 300-cow herd, including improved ventilation and bedding with sand for enhanced animal comfort. There are also more obvious benefits in the long run for the region's dairymen as robotics technology gains ground and support. The introduction of robotics is predicted to improve the lives of dairy farmers by lessening their enormous workloads.

The Lely Group, founded in 1948, directs all its efforts towards creating a sustainable, profitable and enjoyable future in farming for its customers. Lely is the only company worldwide to supply the agricultural sector with a complete portfolio of products and services ranging from forage harvesting to automated feeding systems, barn cleaners and milking robots.

View photos from the event on the Dairy Foundation's facebook page.

Artificial Insemination Certification-Bovine

This is a three-day, intensive hands-on class for those who wish to artificially inseminate their own cattle or gain experience to work for others. The class will cover all aspects of bovine reproduction, from anatomy and hormones to heat detection. Support materials such a "Breeding Betsy" and an endoscope will be available for practice before going to the barn. Students have actual insemination practice on cattle at the Dairy Center.

Date: Tuesday, Wednesday, Thursday;
starting December 10, 2013, ending December 12, 2013

Time: 9:00 a.m. - 3:00 p.m.

Cost: \$149.00

Instructor: Accelerated Genetics

Location: Calmar Iowa's Dairy Center, Rm. 113
Class ID: 23647

Thank you to the following dairies for their donations of semen to the Dairy Foundation:

- Scottmore Holsteins, Westgate, IA;
30 units of Ford
- Farnear Holsteins, Farley, IA;
20 units of Palmer
- Langreck Family, West Union, IA;
20 units of Timid
- Wesselcrest Holsteins, Greeley, IA;
10 units of Milwaukee



Front: Leah Henkes, Fitzgerald Inc.; Gary Kregel, Dairy Foundation President
Back: Rick Rugg, Lely; Dave Lawstuen, NICC; Alexander van der Lely, CEO of Lely; Gijs Scholman, CCO Lely Holding; Mike Fitzgerald, Fitzgerald Inc.; Peter Langebeeke, President of Lely North America

Upcoming Events for Iowa's Dairy Center

Call 563-534-9957 if you are interested in learning more about any of these programs/events. A current calendar of events can be found at www.iowadairycenter.com.

October 1-5 – World Dairy Expo

October 11 – Ag/Dairy Program Visit Day

October 18 - Operations Committee Meeting, 10am

October 18 - Executive Committee Meeting, noon

October 25 – Dairylab Services Fall Tech. Conference

October 30 – ISDA Policy Meeting, 11am

October 31 – Minnesota Dairy Extension Tour

November 13 – Farm Energy Working Group Meeting

November 15 - Operations Committee Meeting, 10am

November 15 - Executive Committee Meeting, noon

November 21 – Midwest Dairy School, 10am

November 28-29 – Offices Closed

December 10-12 – Artificial Insemination Course

December 20 – Operations Committee Meeting, 10am

December 20 - Executive Committee Meeting, noon

December 24-31 – Offices Closed

January 1-2 – Offices Closed

January 13 – Spring Classes Begin