

The Mission of the Northeast Iowa Community Based Dairy Foundation is to enhance and grow the dairy industry through people by providing education, demonstration and research.

Vision: Successful dairy farm families supported by a thriving dairy industry which in turn supports vital local communities.

The Northeast Iowa Community Based Dairy Foundation works with Northeast Iowa Community College and Iowa State University to offer educational programs to students and existing dairy farm families to help them prepare for the future.

Northeast Iowa Community-Based Dairy Foundation • 1527 Hwy. 150 South • Calmar, IA 52132 • Phone: (563) 534-9957 • www.iowadairycenter.com

NON-PROFIT ORG.
US POSTAGE PAID
CALMAR, IA 52132
PERMIT NO. 1

Thank you for your generosity & memberships!

A huge thank you to the individuals and corporations who have recently become members and/ or made contributions.

Are you interested in making a contribution towards the new Iowa's Robotic Dairy Center? If you would like more information about the foundation's new project or would like to make a contribution please contact Megan at kregelm@nicc.edu or 563-534-9957. Thank you for your continued support the Dairy Foundation!

If you are interested in learning more about making a tax-deductible contribution to the Dairy Foundation to strengthen the future of the dairy industry, or supporting us with a lifetime membership, please contact Megan at 563-534-9957, ext. 107 or email kregelm@nicc.edu.

Have an idea, comment or suggestion for the Northeast Iowa Community-Based Dairy Foundation? Let us know! Call 563-534-9957, email info@iowadairycenter.com or talk to a member of the executive board. Thanks!

Be sure to visit us online at www.iowadairycenter.com

Northeast Iowa Community-Based Dairy Foundation
P.O. Box 400
Calmar, IA 52132
RETURN SERVICE REQUESTED



DAIRY CENTER Connection

News from the Northeast Iowa Community-Based Dairy Foundation



Nearly 700 attend Breakfast on the Farm

“Excellent” was the word being tossed around the most at Breakfast on the Farm this year, whether people were talking about the food, weather, tours or kid’s activities. The Dairy Foundation was blessed with perfect weather for the event and the great weather brought hundreds of people with it. The 3rd annual Breakfast on the Farm was held Saturday, June 23rd at Iowa’s Dairy Center. The menu included delicious waffles by Dad’s Belgian Waffles, sausage, cheese curds, yogurt and of course lots of milk and ice cream to top it off. The yogurt was provided by Country View Dairy, the Dave and Carolee Rapson family, and was processed by them on their farm near Hawkeye, Iowa. A total of 630 people were served with an estimated almost 100 more not eating but partaking in all of the activities. A big thank you also goes to WW Homestead Dairy of Waukon for helping to provide the cheese curds and to Iowa Pork Producers for covering the cost of the sausage.

Attendees had a chance to learn how cows and calves are cared for, how milk is harvested, pet a calf, take a tram ride, see a John Deere tractor, TMR mixer, eat ice cream and even milk a cow along with having a delicious breakfast. Questions about dairy farming and food production were encouraged throughout the tour as the event focused on those who

do not normally have access to dairy farms. A cow milking contest was also held with DJs from KOEL of Oelwein and WQPC of Prairie du Chien. After some great competition and a little bit of smack talk WQPC was named the winner by producing the most milk within the two minute time limit. Thank you to both stations for being part of our event and adding to the fun!

In addition, a dedication was held for the newly completed Norma “Duffy” Lyon tribute. Duffy sculpted her first butter cow for the Iowa State Fair in 1960 and has been known as the Butter Cow Lady ever since. As a way to commemorate the life of Duffy, the Northeast Iowa Dairy Foundation has established an artwork display in the front lobby of Iowa’s Dairy Center. This tribute is a small way of remem-

bering Duffy as an icon in Iowa agricultural history. Speakers at the dedication included Dave Lawstuen, NICC Dairy Science instructor and chair of dairy operations for the Dairy Foundation, Dr. Kent Nelson of Nelson Dairy Consultants and Eric Lyon, Duffy’s son. Stop by the Dairy Center anytime to see the new display.

The dairy breakfast is coordinated by Iowa State University Extension and Outreach, Midwest Dairy Association, Northeast Iowa Community College and the Northeast Iowa Dairy Foundation. Many businesses and organizations also contribute to making the breakfast a success. We look forward to seeing you next year at Breakfast on the Farm!

Check out all of the event photos on our facebook page, just search for Northeast Iowa Dairy Foundation!



The breakfast was a great opportunity for the public to learn how milk is produced. Thank you to the NICC Dairy Science Club for getting the cows ready!

A Word from the President - Gary Kregel

It's official, summer is here at least that is what the calendar indicates. But it feels and acts like summer has been here for some time. Crops are way ahead, as I write this third crop hay is ready BEFORE the fourth of July and there will be some corn tasseled by then as well, this is something I haven't seen in my lifetime. However, one thing just about everyone can agree on is that we need rain.

A big thank you to all that attended and helped with the dairy breakfast. The day went very well, the weather was excellent and the trams were packed with those wanting to take tours. The day did bring some very interesting questions of which we will archive for future reference. These questions give an interesting perspective as to what the public and our consumers are thinking.

The Dairy Foundation is making progress on planning for improvements at the dairy center. The robotic milking center is moving forward. Bids had been let and your board selected the low bid from Lely to supply and install the milking equipment. We are now in the process of getting engineering done (a requirement because we are a public institution). Fundraising for this project is also moving quickly. If you would like to participate in this exciting new project, contact Megan at the dairy center.

In closing, let's all pray for RAIN!!!!



SSNHA Bus Grants

Attention all teachers: The Silos & Smokestacks Bus Grant program is a grant initiative designed to help schools in the heritage area fund the transportation costs associated with field study trips to designated SSNHA partner sites. Applications will be available starting August 1st online at www.silosandsmokestacks.org.

Presenting the class of 2012

2012 Agriculture Graduates and their career plans:

Ashley Amos	Farm Service Agency	Sumner, IA
Ashley Anderson	Farm Service Agency	Shell Lake, WI
Aaron Ashbacher	Double Major: Dairy Science	Calmar, IA
Reid Balzer	Family 150 Cow Dairy, Lely	Owatonna, MN
Matt Buls	Family Crop Farm	Trotoli, IA
Devon Chrystal	Herdsman in Waukon, IA	Delhi, IA
Amber Conlan	Herdsman 130 Cow Dairy	Preston, MN
Dustin DePestel	Family 1,500 Cow Dairy	Lewiston, MN
Tyler Egeland	Family Dairy, E&M Farms	Ossian, IA
Chelsey Fagle	ISU Ag Education	Fayette, IA
Jordan Fortsch	Family 250 Cow Dairy	Lewiston, MN
Andrew Graf	Double Major: Ag Business	Hokah, MN
Jill Hefel	Double Major: Ag Business	Holy Cross, IA
Alana Heins	Genex Internship	Eyota, MN
Dayne Heintz	RMIS Robotic Technology	Caledonia, MN
Jacob Hofstra	Equipment Manufacturing, Shellrock, IA	Cresco, IA
Samuel Hoins	Family Dairy/Beef Farm	Waterville, IA
Kelly Huiskamp	Colorado State-Pre-Vet	Decorah, IA
Allison Hunt	Double Major: Ag Business	Earlville, IA
Jesse Johnston	Family Crop Farm	Richland, IA
Travis Kieffer	Family 200 Cow Dairy	Utica, MN
Aaron Lien	Family Dairy Farm	Calmar, IA
Ryan Luhmann	Family Dairy/Crop Farm	Rushford, MN
Christopher Mack	Family Beef Farm	Zumbrota, MN
Dustin Meirick	1,000 Head Feedlot	Alta Vista, IA
Patricia Melcher	Family 60 Cow Dairy	Harpers Ferry, IA
Jared Persons	Family Grain Farm	St. Charles, MN
Pete Schell	Herdsman on Hendrickson Dairy, MN	Lewiston, MN
Chena Schnuelle	Registered Holstein Farm	Westgate, IA
Kipp Schossow	Lewiston Feed & Produce	Rushford, MN
Kristy Smith	Family Goat Dairy	Epworth, IA
Jeffery Sweeney	Family Business, Waukon, IA	Waukon, IA
Jaclyn Tveten	Dairy Co-op	Lewiston, MN
Cody Weis	Benson Farm Service	St. Charles, MN
Adam Whiteaker	Dairy Herdsman	Kasson, MN
Cory Witt	Custom Hire Business	Kendall, WI
Nichole Wurzer	Vet Tech	Waucoma, IA

Become a Dairy Foundation Member today! Also 'like' us on facebook @ Northeast Iowa Dairy Foundation!

Join the Northeast Iowa Dairy Foundation and contribute to the future of the dairy industry!

Name _____

Address _____

City _____ State _____ Zip _____

Phone _____ Email _____

County _____

Mail to: Northeast Iowa Dairy Foundation, Attn: Coordinator
P.O. Box 400, Calmar, IA 52132

Please make checks payable to the Northeast Iowa Dairy Foundation.

Thank you for your contribution. A receipt will be mailed to you.

Please credit \$25 as my annual membership

Please credit \$250 as my lifetime membership

Please update my membership record with the information at left.

Please call me to discuss a gift idea.

I would like to include the Dairy Foundation in my estate plan. Please call me to discuss.

The Northeast Iowa Community-Based Dairy Foundation was created for educational purposes and has been designated as an IRS Sec. 501 (c)3 public charitable educational organization for federal income, estate and gift tax purposes.

AgriScience Banquet Awards

The banquet was held March 29th on the NICC campus.

Outstanding Dairy Internship – Dayne Heintz, Lely
Outstanding Ag Internship – Ashley Anderson, FSA
Outstanding Dairy Science Student – Devon Chrystal
Josh Evers Award – Chelsey Fagle
Outstanding Alumni – Chris Gibbs, Waterville, IA 400 cows
Dairy Friend of Distinction – Ron Lenth, Bremer Co. ISU Extension & Outreach

Thank you to Gary Kregel for being the keynote speaker!

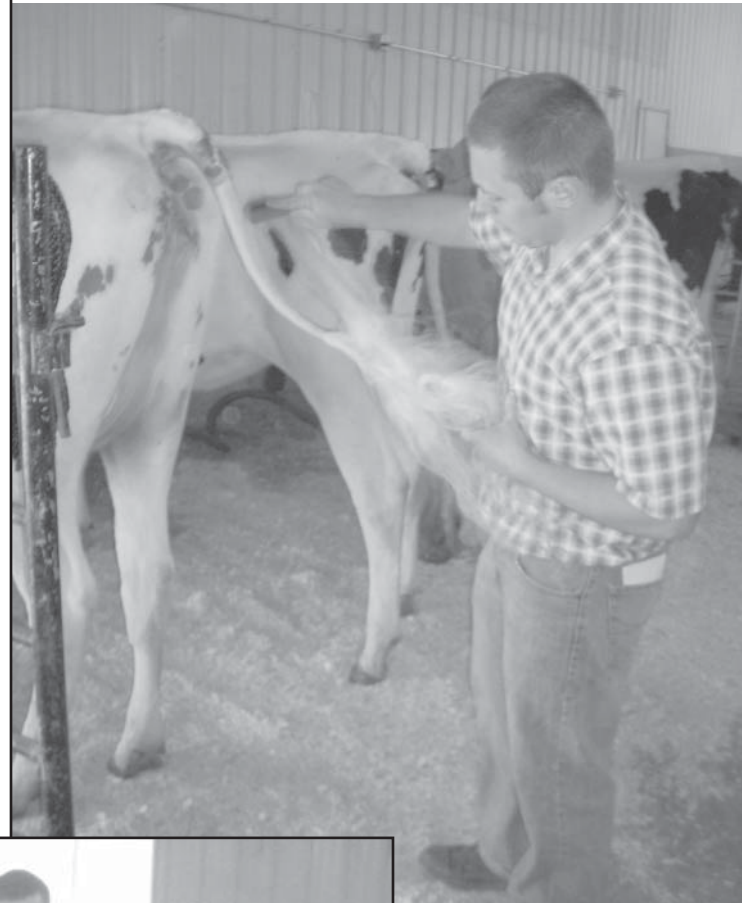
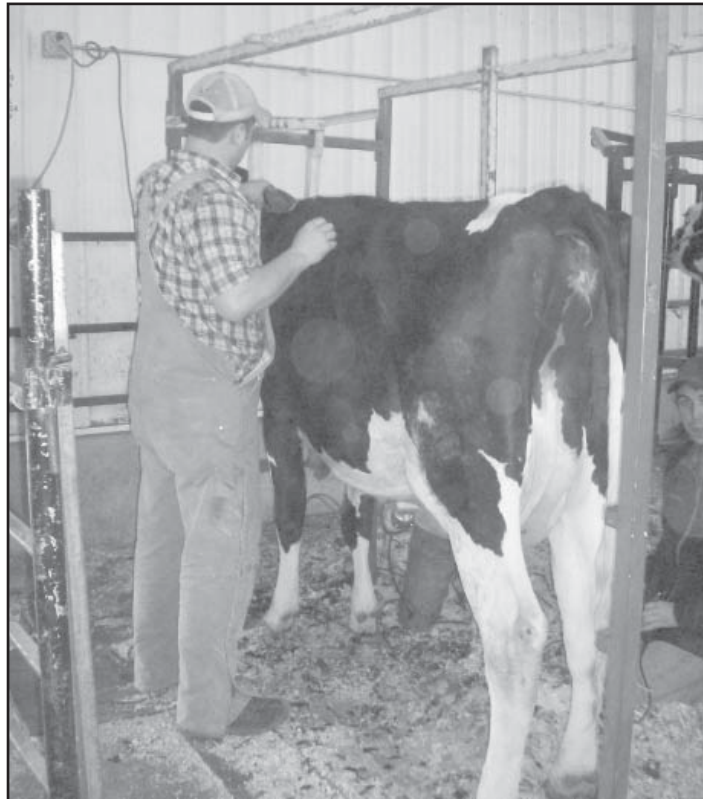


Dayne Heintz of Caledonia, MN received the outstanding dairy internship for the work he did with Lely. Best of luck on all your future endeavors!

Dairy Science Student news

NICC Dairy Science Club Hosts Successful Sale

The Dairy Science Club had a very successful dairy sale on April 5th at the West Union fairgrounds. The cattle began arriving at the beginning of the week and club members worked hard to wash, clip and prepare the cattle for the preview and sale. The sale average was \$1,911; these funds will be used throughout the year for club activities.



Photos clockwise from top-left:

- Aaron Lien clips a cow to get her ready for the sale.
- Andrew Hornberg fluffs tails to make all the girls look good.
- Top selling Jersey (bought by Alana Heins) and Holstein (bought by Aaron Lien) with the sale committee: Alana Heins, Adam Whiteaker, Tyler Egeland, Pete Schell, Devon Chrystal, Aaron Lien and Jeffery Sweeney.

Making Successful Decisions on Robotic Milking Technology?

By Larry Tranel, Dairy Field Specialist, ISU Extension and Outreach

ISU Extension is on a mission to help producers make successful decisions on robotic milking technology to help producers stay in business and reduce their risk of financial difficulties resulting from poor decisions. Robots are a huge investment and making the right decision can improve their propensity to stay in business which in turn can help support our local economies.

Robots are being implemented at a rapid rate in Iowa and around the world for two simple reasons—Cows and people like them. Robots do not impair the welfare of cows and robots can improve the financial and physical welfare of people, depending upon particular situations. At World Dairy Expo this year, five companies had their robots on display and each is unique. Costing around \$200,000 per unit to milk 55-65 cows, these robots do more than just milk cows. They heat detect by measuring activity; find sick cows by measuring weights and production; and manage SCC by measuring milk conductivity and clarity.

Producers can choose “free flow” or “guided flow” systems for the cows to enter the robot as cows are enticed to enter using high quality, pelleted feeds. The robots range from 140-190 milkings per day with 2.4-3.3 milkings on average per cow per day that equates to 3,000 – 6,000 pounds of milk per robot per day. These robots are proving successful in grazing, freestall or bedded pack operations. Robots are pretty efficient at putting the milkers on.

The big question to answer: Will my milk production go up or go down with use of a robot versus my present system. It could go up on 2x milking 3-15% and make it a great value. It could go down from 3x milking 1-9% and make a producer wish he had never seen one. Point is, the success or loss may be pretty specific to your particular operation. Each farm has many variables that will change if robots are incorporated and these variables need to be carefully analyzed by producers.

For producers interested in more information, there are some publications available from ISU Extension and Outreach listed below to help producers answer questions. Our Extension dairy team is also available to help producers analyze the decision and the many variables at work with robotic milking systems. Since cows and people like them, one thing is highly probable—a robot may be milking cows on a farm near you within the next few years.

The Economics of Automatic Milking Systems

http://www.extension.iastate.edu/NR/rdonlyres/B090C051-8602-4456-B3D6-1ED769C2D495/160454/EconomicsofAutomaticMilkingSystems11232011_FINAL.pdf

The Economics of Automatic Milking Systems Spreadsheet Analysis

http://www.extension.iastate.edu/NR/rdonlyres/B090C051-8602-4456-B3D6-1ED769C2D495/160468/EconomicsofAMS2011_11_9Spreadsheet.pdf

Automatic Milking Systems--A Deal or No Deal for Your Dairy?

<http://www.extension.iastate.edu/NR/rdonlyres/B090C051-8602-4456-B3D6-1ED769C2D495/160455/Oct2011AutomaticMilkingSystemsFactsheetUpdated.pdf>

ISDA scholarships awarded

Congratulations to the winners of the 2012 Iowa State Dairy Association scholarships: Courtney Behrens, Steven Brockshus, Erin Davelaar, Chelsey Fagle, Jessica Hammerand, Heath Huitink, Dylan Humpal, Felicia Klostermann, Michele Ries, Josh Simon, and Anna Wilcox.

Once again there were EXCELLENT applicants, thanks to all who applied, we are proud of Iowa's dairy farm families!

Coordinator Update - Megan Kregel

Thank you to everyone for coming to Breakfast on the Farm, the weather was perfect and the turn out was fantastic! I would like to thank all of the sponsors from our breakfast, without the continued support of our sponsors our organization wouldn't be as strong as it is today. Please take the time to thank these local businesses and representatives.

2012 Breakfast on the Farm Sponsors

A & J Petersburg Agency-Insurance & Real Estate
Advanced Graphix
Alliant Energy
Alum-Line, Inc.
AMPI
Bank Iowa
Bruening Rock Products Inc
Casey's General Stores, Inc.
Citizen's Savings Bank
Clayton County Dairy Promotion
Conservation Station
Country View Dairy
Croell Redi-Mix
Decorah Bank & Trust and Cresco Bank & Trust
Decorah Rotary Club
Development Resources of Iowa/Roll-O-Matic
DFA
Don Rausch Construction, INC.
Elanco
Elkader Development Corporation
Fareway
Farm Credit Services of America
Farmers and Merchants Savings Bank
Featherlite Trailers
Fidelity Bank & Trust
Fitzgerald Inc
Foremost Farms USA
Fredericksburg Farmers Co-op
Gehling Custom Pumping
Genex Cooperative
Hacker, Nelson & Co.
Hawkeye REC
Heying Lumber Co.
Hotel Winneshiek
Howard Co. Farm Bureau
Hubbard Feeds, Inc.
Iowa Farm Automation LTd
Iowa Pork Producers



Iowa State Dairy Association
ISU Extension & Outreach
Kerndt Brothers Savings Bank
KOEL AM 950
Kwik Star
KWWL
Lang's Dairy Equipment Inc.
McDonalds
Midwest Dairy Association
New Albin Savings Bank
New Vienna Ag Automation
NICC
Pinters
Pioneer Hi-Bred
Prairie State Select Sires
Reiser Implement Inc
Security State Bank - New Hampton
South Winn Vet Clinic
Spillville Locker
Steuart Laboratories
Swiss Valley Farms
The Clay Studio
Thompson Construction-Monona Overhead Door
Tractor Drivers (Dave Sweet, Lyle Rodman)
United-Suckow Dairy Supply
Walmart
Winneshiek Co Farm Bureau
Winneshiek Co. Dairy Promoters
WQPC
WW Homestead Dairy

Thank you for being a part in Breakfast on the Farm. You helped to make the event a success and we look forward to working with you in 2013!

Breakfast on the Farm Photos



Upcoming Events at The Dairy Center

Call 563-534-9957 if you are interested in learning more about any of these programs/ events. A current calendar of events can be found at www.iowadairycenter.com.

July 4 – Campus closed
July 5 – Dairy Tour
July 13 – Operations Meeting
July 16 – Wellington Place Tour
July 20 – Executive Meeting
July 23-26 – Wyalusing Academy Tours
July 31 – Farm Leasing Meeting, Extension
August 10 – Operations Meeting
August 17 – Executive Meeting
August 22 – Classes begin
August 30/31 – Tour
September 3 – Campus closed
September 5-7 – Food & Fitness Meeting
September 13 – Tri State Dairy Expo
September 14 – Operations Meeting
September 21 – Board of Directors Meeting
October 2-6 – World Dairy Expo
October 5 – Foundation Bus Trip to Expo
October 12 – Operations Meeting
October 19 – Executive Meeting